



Driving with "Roadscan"!

RoadScan FX
DRIVE RECORDER

Specifications

Normal operation voltage: 12/24V
 Minimum operation voltage: 9V
 Maximum operation voltage: 32V
 Maximum power consumption amount: Approx. 2.5W
 Operating temperature: -20℃~70℃
 Storage temperature: -30℃~85℃
 Recording frame rate: Approx. 30Frames / sec.
 Image format: MPEG
 Recorded Time: Before 10 sec. / After 20 sec.
 Camera angle: 120 degrees
 Camera Pixel: 300K
 Memory: Dual memory, expandable
 Size: 89 X 56 X 26(mm)
 Weight: Approx. 120g

PLKTechnogies Co., Ltd "Roadscan Series"



RoadScan DE



RoadScan DE Enterprise



RoadScan FX



RoadScan PRO



RoadScan DM
RoadScan TCC



RoadScan DTW



The Excellent Company
Brand of Seoul



HYUNDAI KIA
VENTURE NETWORK

PLKTechnogies Co., Ltd

Importeur / Distributeur BENELUX

RCBI

R & C Business International B.V.
 Spoorstraat 7 - U 705
 4702 VV Roosendaal
 Nederland

GSM NL : +31 -(0)6-53618876
 GSM B : +32 -(0)495-518486
 FAX : +31 -(0)164-602928
 E-mail : info@roadscan.nl info@roadscan.be
 Website : www.roadscan.nl www.roadscan.be

Importeur / Distributeur

RCBI
BENELUX


PLK TECHNOLOGY

RoadScan FX
VIDEO EVENT DATA RECORDER



RoadScan FX

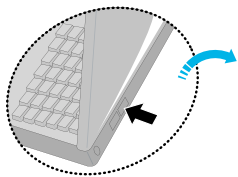


Charming Points of Roadscan FX !!

- 1st, The user can check recorded video through 2.4 inch LCD directly.
- 2nd, Attractive icon scrolling selection menu, Elegant design.
- 3rd, Can also be used as "handheld" digital camera and camcorder for desired purposes.
- 4th, CCTV parking surveillance function.
- 5th, Video out for external screen playback purpose.
- 6th, 360 degrees mounting facility to record in any direction.
- 7th, Dual memory.

VEDR (Video Event Data Recorder)

When impact is felt from a vehicle, Roadscan FX detects the impact automatically, and records the video on a real time basis from 10 sec. before to 20 sec. after the incident. Roadscan FX can record video when the device feels motion for example, incidents, brake and speed bumps, car accident etc. These videos will be recorded to an internal memory for safe recording and the user can see these videos on the LCD directly.



PC



RoadScan FX Manager

Continuous Recording (CCTV)

This function can record continuous videos for desired purpose. During driving the FX records video with g-force acceleration data. During standstill and parking this function provide CCTV surveillance. Additionally, during parking, Roadscan FX can check the level of the car battery and be turned off automatically for preventing battery discharge.

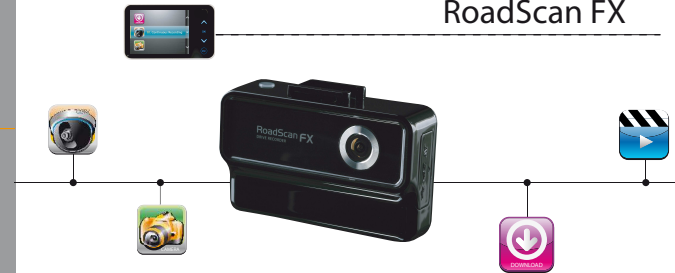


Check Images on LCD Screen

Roadscan FX is equipped with LCD screen. The user can check the recorded video and data immediately. Roadscan FX is also equipped with an internal lithium battery so it can run for about 1 hour even when no DC power is applied. During sutch time all the images and pictures on the LCD can be checked. In addition, the Roadscan FX can be used as a handheld camera and camcorder for desired purposes.



RoadScan FX

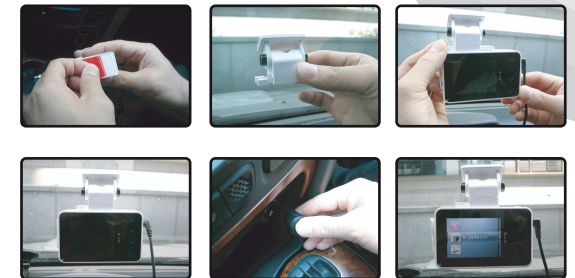


Elegant Design & Easy User Interface

Touch button function on the rear side of the Roadscan FX enables the user to use the FX lightly and comfortably. The Roadscan FX user interface has neat icons and an easy structure to maximize the convenience.



Installation Sequence



- Step 1) Take out the cover of the two-sided tape attached on the head.
- Step 2) Attach the head at desired place of windshield.
- Step 3) Loosen the screw of head by a coin and then adjust the head to front/back and left/right for right angle.
- Step 4) When the angle is properly adjusted, tighten the screw to fix.
- Step 5) Join the head and main body.
Please check click sound of the device for completion.
- Step 6) Connect the power cable (cigar jack) to main body.
- Step 7) Check power and LCD screen.