



HYUNDAI · KIA
VENTURE NETWORK

ROADSCAN DTW

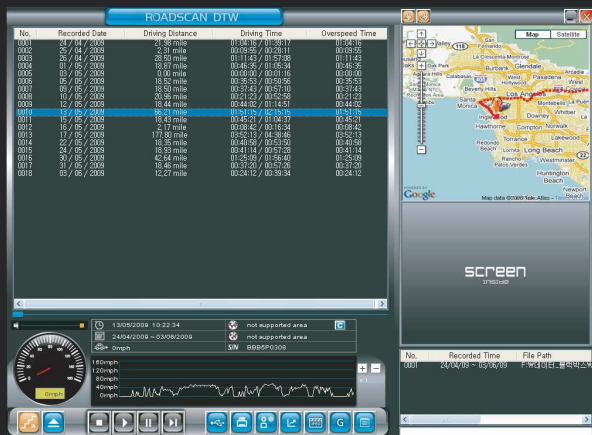
DRIVE RECORDER

Roadscan DTW 1.0 is the most powerful fleet tool available today that is years ahead of the competition. Be with every driver at all critical moments quickly identifying driving habits and helping to improve safety.

As tamper resistant as possible, all data is encrypted and only runs on our software, but can also be securely copied, emailed or transferred on a disc if necessary.

Maximize the efficiency of your fleet, reducing maintenance and repairs in minimum time.

The DTW 1.0 also assist the driver to record events and incidents automatically as well as by driver choice, like emergency case recording.



DTW 1.0 by PLK is the new motion activated dual lens video and data recorder with audio and fulltime GPS that overlays Google Earth satellite images. Exterior recording only or synchronized exterior and interior recording is possible. Digital Tachometer (DT) data is taken at regular intervals to compliment the GPS data, showing driven route with the vehicle speed shown on the screen.

Roadscan DTW 1.0 by PLK is also equipped with an infrared LED for interior night vision, remote panic button, taxicam software capabilities, WiFi downloading, capable of communicating through other onboard equipment (WiFi, cellular, satellite) and a LCD screen.

You can review the recorded video events right on the camera LCD. The DTW hold up to 300 (6x50) events of 40 seconds each (-20/0/20+) depending SD-Card used. Factory setting is based on 120 (6x20) events of 40 seconds each with a 4 Gb SD-Card installed. The event timing is adjustable between 10 to 40 seconds.



SECURITY: Hardware



The device hardware secured part is protected by a specific hardware key that allow :

the substitution in case of manuntention
the access to the power supply connector
the access at the SD Card insertion slot

EVENT TRIGGER SOURCE :

Accelerometer (automatic)
Manual (emergency button on the camera body)
Manual (remote emergency button)
Remote (input channel) 2 protected input channels available

EVENT TRESHOLD : configurable in independant mode X Y, Z axis in the range 0.1 - 1DG.
Data recording splitted in different memory erea for high and low magnitude level events.

CRITICAL EVENT DETECTION : event over 1.0 - 2.0 DG (setup based) are classified as "CRITICAL".

ACOUSTIC SIGNAL : Buzzer (enabled/disabled by SW setup)

DIGITAL TACHOMETER (DT) : Driven route reproduction on Google Map with location and speed data.

OPERATOR INTERFACE : Display TFT 320*240; Multifunction 5+1 buttons keyboard; Status LED.
Note: the secondary video channel (internal view) can be disabled via a protected setup menu.

SECURITY: Communications

COMMUNICATION CHANNELS : USB 2.0 communication port and/or WiFi 802.11 b/g communication channel.

The WiFi communications is protected via a WAP 2 autentication key. The communications protocol WiFi / USB messages are protected via a 64 bit key.

COMMUNICATION PROTOCOL : open, the communication protocol specifications are third party available and allow the remote device setup, command and control.

SPECIFICATIONS

Power Supply (polarity inversion protection transient overvoltage protection)	12 /24V 8-32Vcc - 3W
Operating temperature , Storage temperature (Celsius)	-20 +60 / -30 +80
Main Video Channel (forward lens)	640 x 480 pixel /25fr-12,5fr/sec
Secondary Video Channel (Interieur lens)	640 x 480 pixel /12,5fr/sec
Optical field	120 degrees
Video sensibility (Main Video Channel)	1 lux
Video sensibility (Secondary Video Channel with IR-LED)	0 lux
Audio channel	12 KHz
GPS receiver	Integraded SIRRf 20 sat
Memory Device	Flash SD card (4-8 GB)
Event Recording Period	(40 sec) -20 sec / +20 sec
Total Event Recordable (depending SD-card size)	> 120 to < 300 events
Operating Software	W2000 / XP /VISTA / W7
Size	115 x 90 x 35
Weight	175 g

Note: Specifications and appearance subject to change without prior notice.

Importeur / Distributeur BENELUX



R & C Business International B.V.
Sporstraat 7 - U 705
4702 VV Roosendaal
Nederland

GSM NL : +31 -(0)6-53618876
GSM B : +32 -(0)495-518486
FAX : +31 -(0)164-602928
E-mail : info@roadscan.nl info@roadscan.be
Website : www.roadscan.nl www.roadscan.be